



# Lake Washington Saddler

January/February 2018

---

Editor: Caroline Callender

[saddler@lakewashingtonsaddleclub.org](mailto:saddler@lakewashingtonsaddleclub.org)

## **Ok. I DID IT!!!! I RENEWED MY MEMBERSHIP!!!**

Just like that, snap! And it's done, and I feel great! You can too. Just go to the LWSC website, <http://www.lakewashingtonsaddleclub.org/>, pull down the "Club Info" tab and click on **Membership**. You can either print off a form, then fill it out and mail in with a check, (address is on the page) . . . OR . . . the easy way: do it online!

It's a two-step process to register and pay online. Click on the 'Join or Renew Online' link, where you can fill in your membership info, submit it, and then you will receive a prompt with a link to Paypal, where you can use your own password to access your account, and pay your membership fee. If you do only the first part without paying by Paypal, your renewal will not be officially complete. If you wish to use a credit card, use the Paypal link, and choose 'credit card' .

**Fees have not changed in many years, but our good fortune cannot last forever.  
We are still the best deal in town!**

**Individuals - \$30**

**Family - \$45**

---

It's hard to believe, (for a lot of reasons), that 2017 is behind us and we are stepping out boldly into 2018!! I can remember thinking any year with a "2000" to it was WAAAAAY in the future! But, here we are, and the future doesn't look so bad, does it? We're still riding, and we still

have horse properties around the park! And, we have ANOTHER great year of shows and events planned. It doesn't get any better than that!

## LWSC Event Schedule 2018

Below are the LWSC sponsored events ONLY. For a full calendar showing additional, non-club events go to: <http://www.lakewashingtonsaddleclub.org/park-calendar.html>

### March

**24** LWSC Field Trip to Pegasus Training & Rehabilitation Center in Redmond

### April

**22** LWSC/EI Dressage Schooling Show to Benefit USDF Region 6 Youth Program

**28-29** LWSC Hunter/Jumper Clinic

### May

**5** LWSC "Spring Has Sprung" Scavenger Hunt Trail Ride

**11** LWSC Members only jumper schooling (5pm)

**12-13** LWSC Hunter/Jumper Schooling Show\*

### June

**1** LWSC Members only jumper schooling (5pm)

**2-3** LWSC Hunter/Jumper Schooling Show\*

**10** LWSC Dressage Schooling Show

### July

**7** LWSC Horses & Hops Prize Ride\*

**8** LWSC Trail Obstacle Challenge

**15** LWSC Dressage Schooling Show

**21** LWSC English/Western Schooling Show

**25-29** LWSC Horsemanship from the Heart Clinic

### August

**12** LWSC Dressage Schooling Show

**17** LWSC Members only jumper schooling (5pm)

**18-19** LWSC Hunter/Jumper Schooling Show\*

**25** LWSC Equine & Vines Prize Ride\*

**26** LWSC Trail Obstacle Challenge

### September

**16** LWSC Dressage Schooling Show

**21** LWSC Members only jumper schooling (5pm)

**22-23** LWSC Hunter/Jumper Schooling Show\*

### October

**6** LWSC Fall/Halloween Scavenger Hunt Trail Ride

### November

**3** LWSC Annual Awards Banquet - Bellevue Marriott

## New This Year – LWSC English/Western Schooling Show!

We are pleased to announce that on **July 21<sup>st</sup>**, LWSC will be holding a schooling show for both English and Western riders. This show will consist of flat classes for all ages and abilities in both Western and English disciplines. Ribbons will be handed out to 1<sup>st</sup> through 5<sup>th</sup> place with prizes for 1<sup>st</sup> place winners in each class. Highpoint prizes will also be offered.

This is a great opportunity to experience showing your horse in a relaxed and supportive environment. If you have thought you might be interested in showing, but are a bit intimidated because you don't really understand how to participate, this is the show for you! Have you been diligently taking lessons and would like to see how you and your horse might do in a class? This is a wonderful opportunity to dip your toe into the show world and find out!

Stalls will be available for rent and the cook shack will be open. Many thanks to Robin Foster for volunteering to manage this show! And many thanks to the E/W Show Team including; Maggie Phillips, Jennifer Duncan and Karen Hall. **If you would like to help, volunteers are needed and sincerely appreciated.**



## Julie Carpenter Horsemanship Clinic in July is full but...

Julie will be returning for another LWSC sponsored, five day clinic from July 25<sup>th</sup> through July 29<sup>th</sup>. There are only six participants to ensure each participant receives focused attention. Although the July clinic is full, if there was interest we could put on a second clinic in early September (5-9). The clinic cost is \$1,225.00 which covers the clinician fee, arena rental, travel, etc. If you are interested in a September clinic, contact [president@lakewashingtonsaddleclub.org](mailto:president@lakewashingtonsaddleclub.org) To learn more, please check out the clinic details on our web site. <http://www.lakewashingtonsaddleclub.org/clinics.html>

Also remember... LWSC members audit for free! Non-members audit \$25/day.

## April 28-29 Sally Collins HJ Clinic



Get ready for show season! Small groups of riders will work on show readiness and coursemanship over the course of a two day clinic. Jumps and courses set will be identical to those used at our horse shows, so it is a perfect opportunity to get young horses out and about, riders moving up to a new division a bit of confidence before our first show, and seasoned riders some polish on their rides. Saturday night will feature a potluck dinner and Q and A session with Sally for all LWSC members.

Groups:

18"-2'

2'3"-2'6"

2'6"-2'9"

3'-3'3"

---

Groups will be limited to four riders and will range from cross bars to 3' and are open to children and adults.

- Clinic cost is \$200 per rider if a LWSC member and \$250 if not. Please renew membership prior to enrolling in the clinic!
- Stalls are available Friday-Sunday for \$50 and must be stripped on Sunday before leaving. Each stall comes with a free tack/feed stall.
- Auditing is available at no cost to LWSC members and \$25 for the general public.
- A spot is reserved for this clinic upon receipt of full payment.

Please email your interest to Kate Sharkey at [hjmanager@lakewashingtonsaddleclub.org](mailto:hjmanager@lakewashingtonsaddleclub.org)

## Recent Tragic Outbreak of EHV-1

As most of you know, there was a recent outbreak of Equine Herpes Virus, type 1. This is the most serious form of Equine Herpes, and can cause such severe neurological damage that there is no option but to put down the affected horse. It took the lives of 7 horses from Gold Creek Stables.

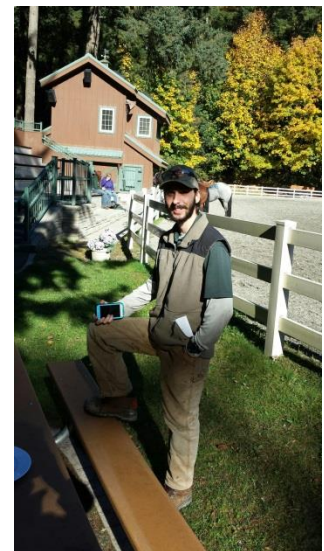
Our heart goes out to all the horse owners and stable owners who were so tragically affected by this terrible disease. We are sincerely grateful for all their efforts at strict quarantine, which kept the virus from spreading further. LWSC donated \$200 to the GoFundMe account, which raised almost \$19,000 to help horse owners defray their vet costs. The club also provided pizza dinner one night and lunch one day for all the folks working so hard to care for the horses. The equestrian community truly rallied and supported this catastrophe and we should all be proud and grateful that we have such a wonderful community. At present, no new cases have been reported and quarantines are lifted.

## Our 'Guardian Angels' in the State Parks

As we previously reported Rich Benson, the Area Manager for this area of State Parks retired last year, after 35+ years of service. We are happy to announce that **John Ernster** was selected as the new Area Manager. John has experience with horses and an appreciation of the unique needs of an equestrian park. He has attended a couple of the LWSC Board meetings and we look forward to getting to know him better and continuing our strong partnership with State Parks. You may even see him out on horseback as we have promised him (and hopefully his wife and daughter) a trail ride when the weather is warmer.

### **And, Thank You, Bryan! Best of Luck from here on out.**

**Bryan Swaffield**, the Senior Park Aide for Bridle Trails for a couple of years has moved on to a new job outside of WA State Parks. Bryan was always so helpful and easy to work with. His support of our shows and events was fantastic. His hard work helping Ranger Matt maintain the Park show grounds and trails was outstanding. His cheerful and "can do" attitude will be missed. We wish him the best in his new endeavors. Our new senior park aide will have big shoes to fill!



## WANTED: New ideas for club field trips!

Some benefits of membership are the field trips we've been putting together, for MEMBERS ONLY! Now, we are looking for ideas/suggestions for 2018 field trips. If you have an idea of a fun or educational place to go see, let us know at this link:

<http://www.lakewashingtonsaddleclub.org/field-trips.html>

the last trip we sponsored was to Barn Pros . . .

## October Barn Pros Tour

Barn Pros founded and based in Monroe, Washington State ships barns nationwide. The company had never had a request for a tour before so they set up a tour of a client barn just for the Saddle Club. Christel Haven Equestrian Center located in Duvall graciously let the Saddle Club and Sam Etsell from Barn Pros tour their "Olympic" model.

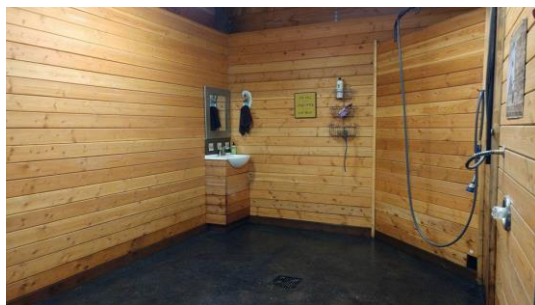
The company has two divisions which caters to new construction and another for remodels and accessories. You can view see other models at:

[www.barnpros.com](http://www.barnpros.com)



Olympic Model and Sam Etsell from Barn Pros

Below are pictures from the tour:



The Horse Shower inside the barn



## Have you ever thought about serving the club as a Board Member?

There are two openings waiting for the right persons, . . . Could that be you? If you are even just curious about it, don't hesitate to contact ANY current board member. Heck, contact me!

---

## Off leash dog? Cyclist in the park? **Report it!!!**

It seems that recently there have been an increasing number of reports from riders encountering off leash dogs and cyclists in the park. There have been a number of incidents resulting in riders falling. While there are signs at all official entrances to the park stating clearly that dogs must be on leashes, we all know that there are just those one or two dog owners who think the rules were made for someone else.

State Parks would like to try to get a better picture of how many such incidents there are, where and when, and if possible, a description of the offending human/dog. We have partnered with the to include a reporting ability on our web site. Here is the link to make your report:

<http://www.lakewashingtonsaddleclub.org/report-off-leash-dog-or-bicycle.html>

---

## *Passages*

This has been a hard year for some, with quite a few horses leaving us for Rainbow Pastures.

Our hearts go out to the owners and all those that loved the seven horses lost during the EHV-1 outbreak. We could not be sure we had all the information regarding horses and owners correct at the time of this publishing so we have not mentioned the owners but we wanted to pay tribute to the following horses; **Gigi, Maggie, Paco, Rose, Troy, Ditto, Maggie**

Maggie Phillips lost her beloved 28 year old OTTB, **Beau**  
Ksenia and Matt lost their sweet little chestnut mare, **Maggie**  
Cristina Dugoni lost her dearly loved Appaloosa mare, **Tilly**  
Susan and Kathryn Beebe lost their fellow, **Hobbit**  
Thomasin Levin and Patricia Allen lost their chestnut mare , **Yuki**

---



And, on a lighter note, . . . . Horseback Christmas Caroling!

## Oh What Fun, It is to Ride....in Bridle Trails!

Bridle Trails is a wonderful and diverse community that includes some unique neighbors. They have four legs. For almost 20 years, they have been dressing up for the holidays to bring cheer and smiles to their neighbors. On a normal day in Bridle Trails, it is relatively quiet and if you're lucky, you sometimes get a glimpse of an equine friend riding in Bridle Trails State Park. One day a year, the holiday cavalry comes out dressed in their holiday best. Jingle bells ring and neighbors sing. There were 15 horses and 20 people who came out to greet the neighbors at Bridlewood Circle, Silver Spurs and Bridle View. The highlight was their visit to the Bridle Trails shopping center. People greeted them with cookies and carrots - even the riders get some hot chocolate. A truly wonderful annual event for the whole family.



Holiday Horses Caroling through Bridle Trails Shopping Center and Neighborhoods

