



Lake Washington Saddler

February 2019

Editor: Suzanne K. Hitz

saddler@lakewashingtonsaddleclub.org

SnowApocalypse has hit western Washington this month! Considering we don't get much snow down in the lowlands, we aren't really equipped to deal with it. As usual, the snow was spotty, and depended on geography, but this time, everybody got LOTS. It could have been anywhere from 8 inches, to depths measured in feet! But for two weeks, everybody dealt with it.

A fellow horseman, who has just moved to the area from upstate New York, posted on Facebook, (I paraphrase) "Move to Washington, he said. It only gets about 1 inch of snow per year, he said. It's just wet, he said." Now we're onto round three.' The picture she posted was one with about 2 feet of snow. I told her we only get this about every ten years or so, for which she was grateful!

Between the roads, the ice, and the generally despicable weather, getting out to see our horses could be difficult. But many were able. I sent out a request for pictures of you, and your horses, playing in the snow, as well as pictures of Bridle Trails State Park in this years snow fall, and you responded enthusiastically. I have posted them below.



Avery Jacob and Lexi.



Avery Jacob and her mare Lexi giving sled rides!



Trainer Troy Corbett's daughter, Savannah, and her American Saddlebred, Mr. McQueen, had fun posing for mom Julie's photographs. Julie is a professional photographer, and although not currently running a business, she enjoys keeping her hand in.

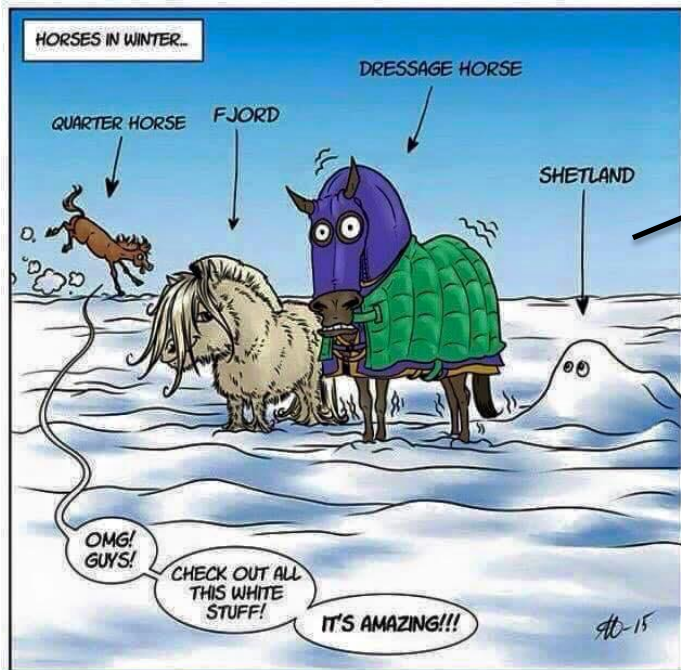


Candice Boyd sent this picture of Hilda!



Thoroughbreds.

(Courtesy of Sharkey Farms)





Stacy Taylor sent this picture of the Northern edge of Bridle Trails Park.

Beth Novak's Caper (JC name: The French Cage) realizing how cold rolling in the snow can be.



It seems that although cold, both people, horses, and dogs were getting out and enjoying the novelty!

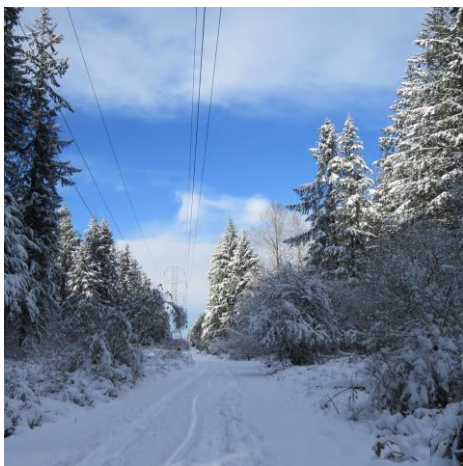


Photo of Bridle Trails State Park by Jim Erckmann.



Heather Andreini and her dog Finn enjoying the snow at Bridle Trails.

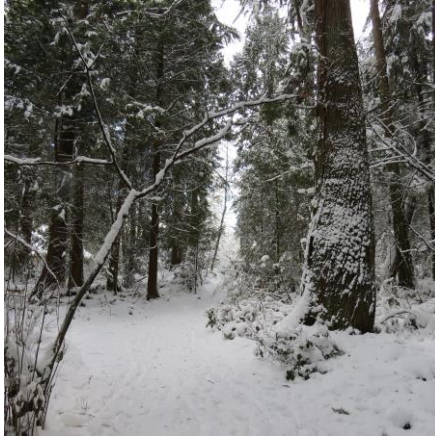


Photo of Bridle Trail State Park by Jim Erckmann.



Kaitlyn Twentey on Calvin out at Sharkey Farms. Calvin is a just 6 year old TB, who came off the track in August of 2018. He was bred by Allaire Farms, and JC name is Lucky Tiger. Who says TBs are crazy hot?



Aubrey Newbrey and Flint.



Sharkey Farms girls on a snowy trail ride.





Driving by Bridle Trails, courtesy of Candice Boyd.



Heather Andreini and Finn in the park.



Hunter/jumper trainer Shannon Hendrickson, of Signature West Farms posted this pictures of her horses trying to figure out who has the choicest part of the caveletti to nibble on.



Olivia Hull jumping Quinn.



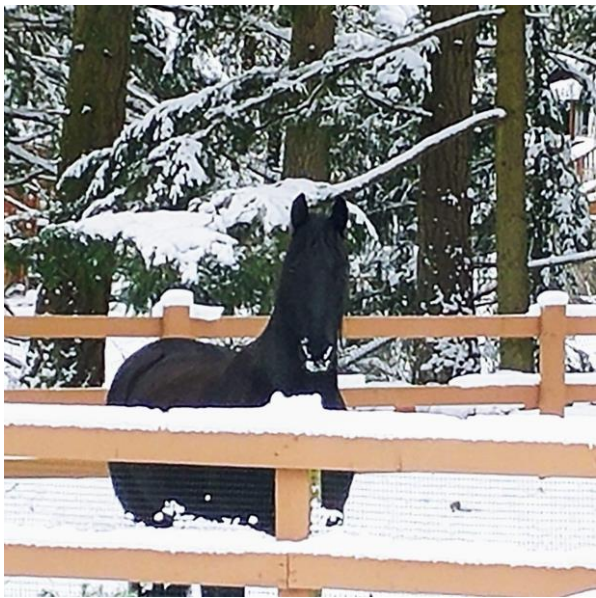
Kaitlyn Twentey snowshoes to Sharkey Farms in order to ride Calvin (JC Lucky Tiger)



More Kaitlyn and Calvin enjoying the snow.



Braelyn Webb riding Yukon.



Some horses are alert, and some just take a nap!
Photos from Candice Boyd.



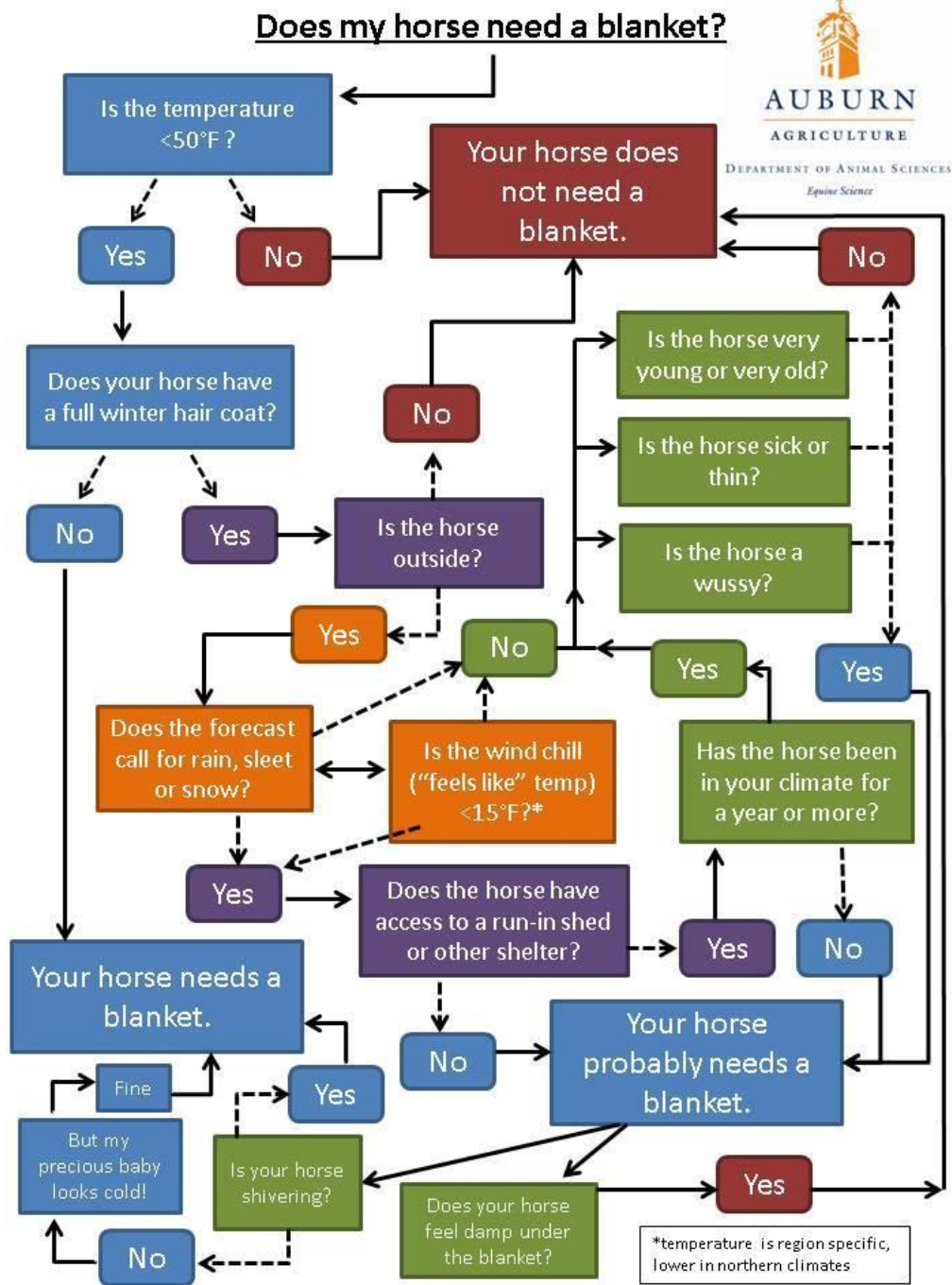
Danny is not amused. Photo from Kate Sharkey.



Winter horse. Sharkey Farms.

Thank you all for sharing the wonderful pictures of our unprecedented snowfall!

Another subject that winter never fails to bring up is the great blanket debate. To blanket, or not to blanket your horse. Of course, we all know the basics – if your horse is stalled and can't move around and forage, blanket your horse. If he's clipped, blanket your horse. But what about turn out? What about horses with a thick winter coat? There are as many theories as there are people. The best graphic I've seen on the subject is posted below. I think I may fall into the 'But my precious baby looks cold!' school of thought. Still, the flow chart is informative as well as humorous. Enjoy!



CALENDAR

Here's what is coming up in the next few months, and it's going to get here a lot sooner than you think!!

March 31 EI Dressage Schooling Show

Equestrian's Institute will host their earliest show of the season here! Let's hope the weather cooperates. More info at: <https://www.einw.org/schooling-shows-at-bt.html>

April 13 BTPF Egg Hunt (Bridle Trails Park Foundation)

Our partner in supporting the park has wonderful activities for non-riders who love the park. This is an egg hunt, for kids. Please consider avoiding the main arena that day, unless your horse enjoys meeting gremlins popping out of bushes.

20-21 LWSC Hunter Jumper Clinic

Noel Clark clinic. Full information at : <https://www.lakewashingtonsaddleclub.org/clinics.html>

27 BTPF Earth Day Volunteer Event Bridle Trails Park Foundation

Volunteers work on various projects to maintain and improve the environmental health of our park. This is our 'sister' organization, with whom we work closely to support our beloved park. More information on this great organization at: <http://www.bridletrails.org/welcome.html>

27 LWSC/EI Ride & Review for USDF Region 6 Youth

28 EI Dressage Schooling Show

More information at: <https://www.einw.org/schooling-shows-at-bt.html>